



**BALMORAL
ESTATE**

House and Land Package **\$750,520**

BEDROOM 4 | BATHROOM 2 | GARAGE 2



ATTICA 25

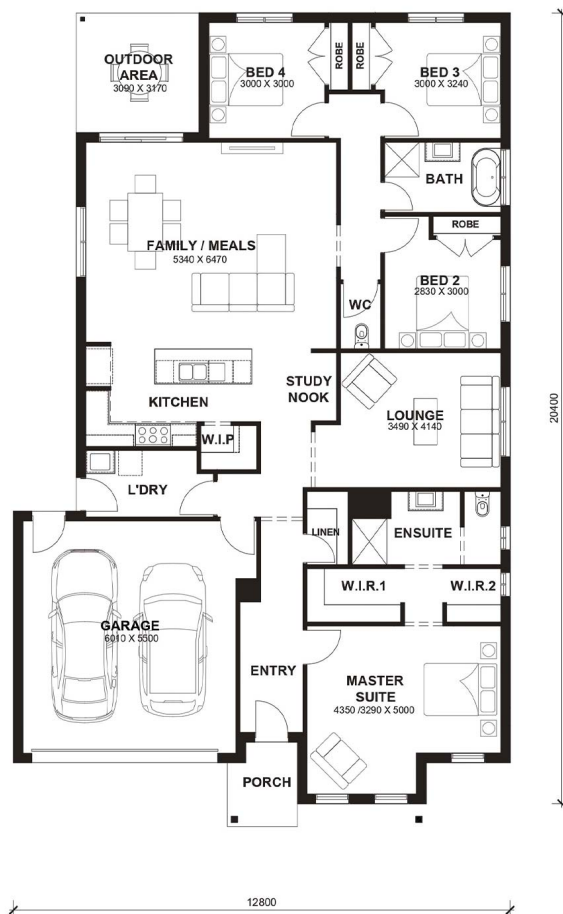
Lot 828

Landsize: 448m²

Frontage: 14m

Inclusions:

- Double Glazed Windows (Design Specific).
- TITLED LAND
- 20mm Stone Benchtops Throughout.
- 22.5 Degree Roof Pitch.
- 2590mm High Ceilings Throughout.
- Ducted Heating.
- Evaporative Cooling.
- Flyscreens To All Openable Windows.
- LED Tri-Colour Downlights Throughout.
- Glazed Porcelain Tiles To All Wet Areas (Including Showerbase).
- Soft Closing Drawers & Doors To All Cabinets.
- Tile Splashback To Kitchen.
- 215L Heat Pump Hot water Service.
- Coloured Concrete Driveway



info@balmoralestate.com.au

Visit Us By Appointment Only 87 Alfred Road, Strathulloh VIC 3338

While best endeavours have been used to provide information that is true and accurate, Balmoral Estate, its consultants, agents and related entities accept no responsibility and disclaim all liability in respect to any errors or inaccuracies it may contain. Prospective purchasers should make their own enquiries to verify the information contained herein.